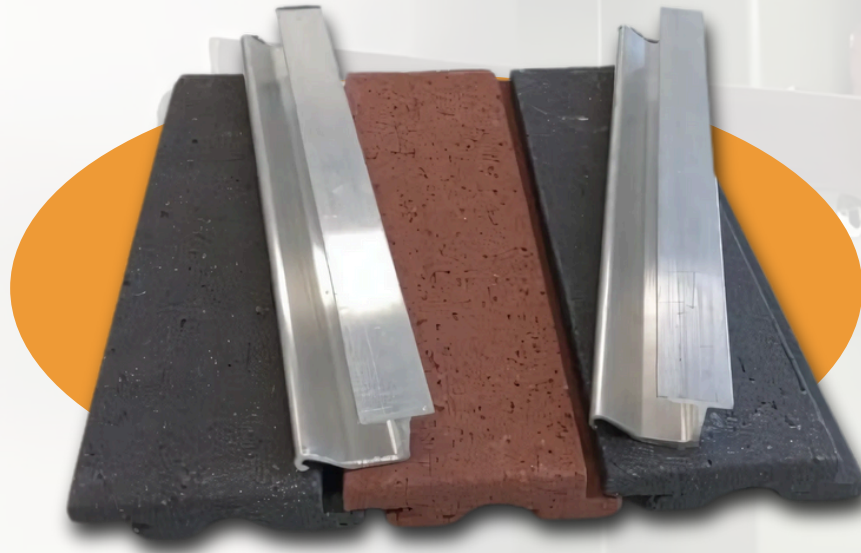




# BRICK IN DRY CLADDING SYSTEM

DURABLE, GROUT FREE, QUICK INSTALLATION



Follow Us

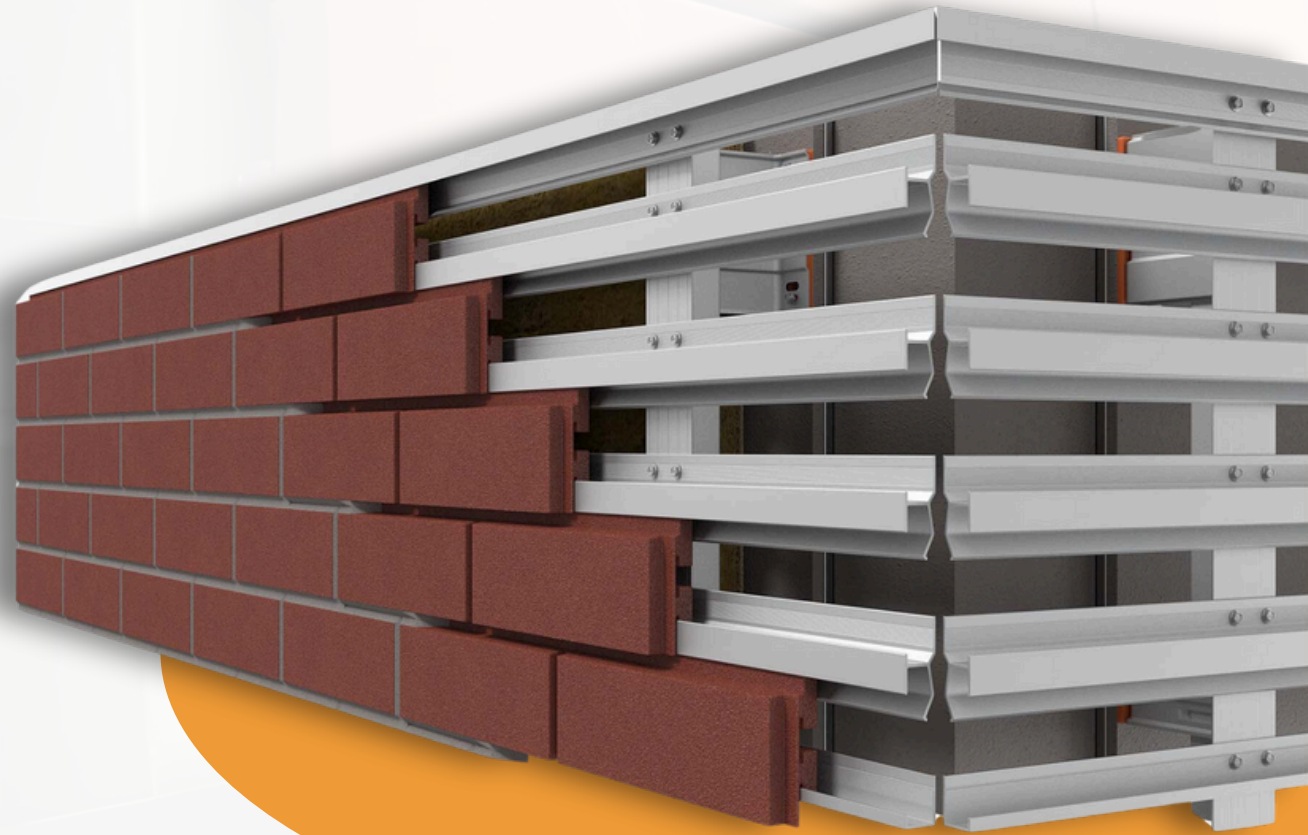


[www.citadelinfraas.com](http://www.citadelinfraas.com)

# PRODUCT INTRODUCTION

---

For many architects an offset brick pattern on the building facade is a must as it brings to mind the traditional look. However to achieve this can be a problem as although there are a number of brick solutions available - almost all of these are with wet cladding which requires not only a lot of time to install but also a lot of precision to get the grooves right and also the grouting. To solve this problem now Citadel is pleased to announce a solution for the same with terracotta bricks which can be fitted with a dry cladding system.

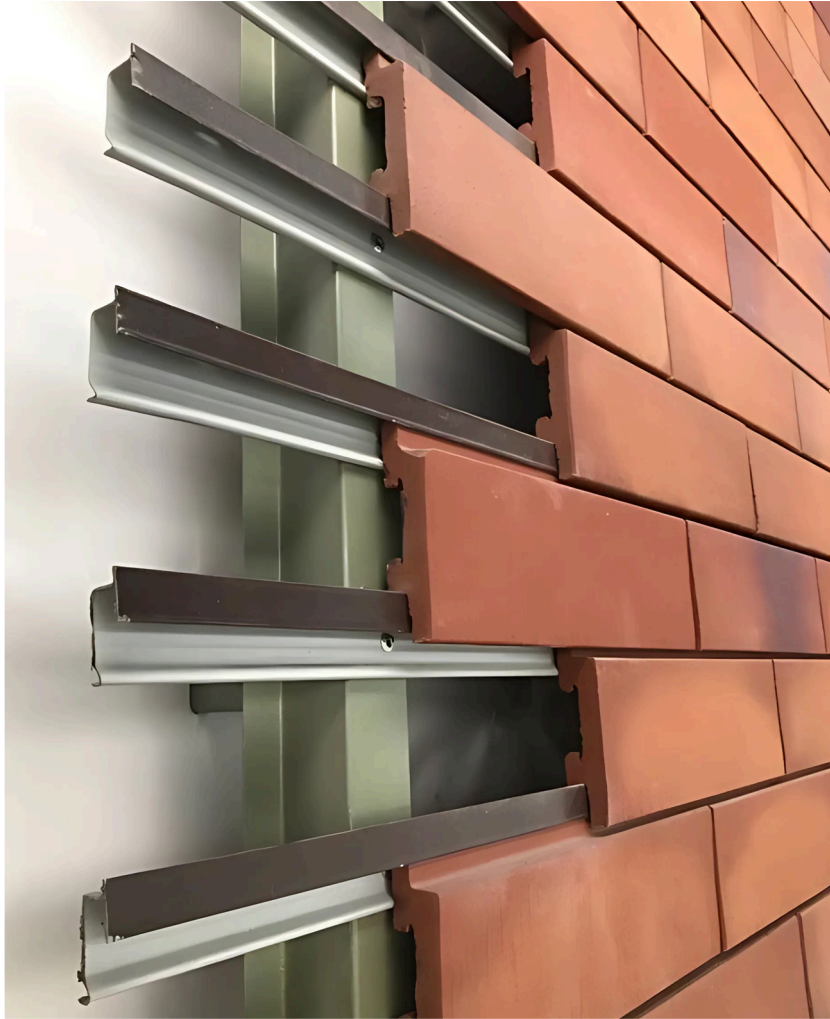




## **BRICK IN DRY CLADDING SYSTEM**

DURABLE, GROUT FREE, QUICK INSTALLATION

# FITTING SYSTEMS OF DRY CLADDING BRICK



ALUMINUM FITTING SYSTEM



GI FITTING SYSTEM

# ALUMINUM FITTING SYSTEM



The aluminum fixing system is a robust and lightweight solution used to attach dry cladding bricks to a building's facade. It involves using aluminum profiles or brackets to hold the bricks securely in place. This system is highly durable and preferred for its corrosion-resistant properties, making it ideal for exterior application.

## ADVANTAGES



Lightweight



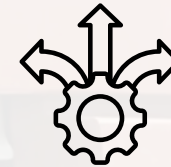
Corrosion Resistant



Precision



Easy Maintenance



Aesthetic Flexibility

**3. Brick Installation:** Bricks are anchored using specialized clamps or holders integrated into the aluminum framework

**2. Adjustable Panels:** Vertical and horizontal profiles are aligned to create a grid.

**1. Primary Framework:** Aluminum brackets are fixed to the wall as the base framework.

# GI FITTING SYSTEM

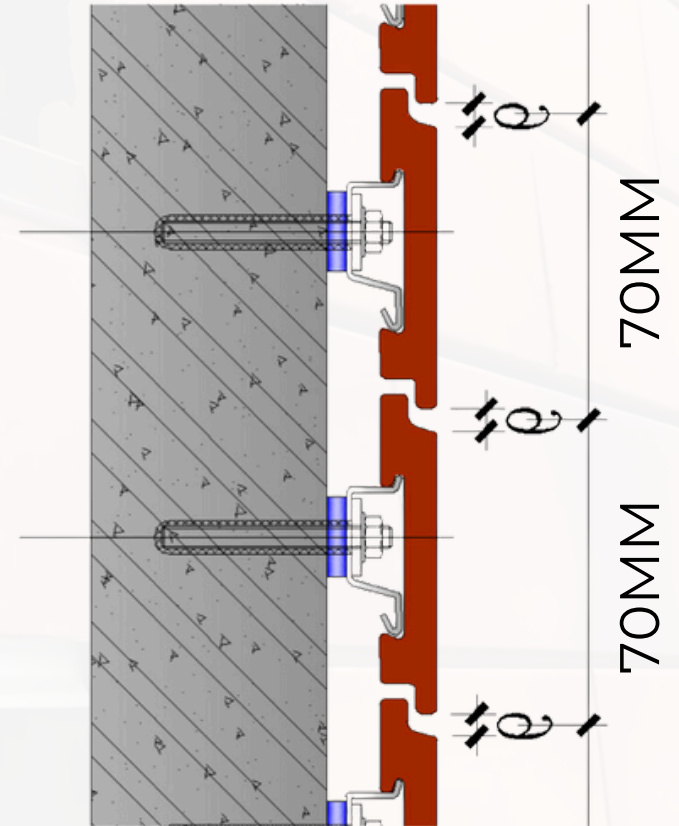
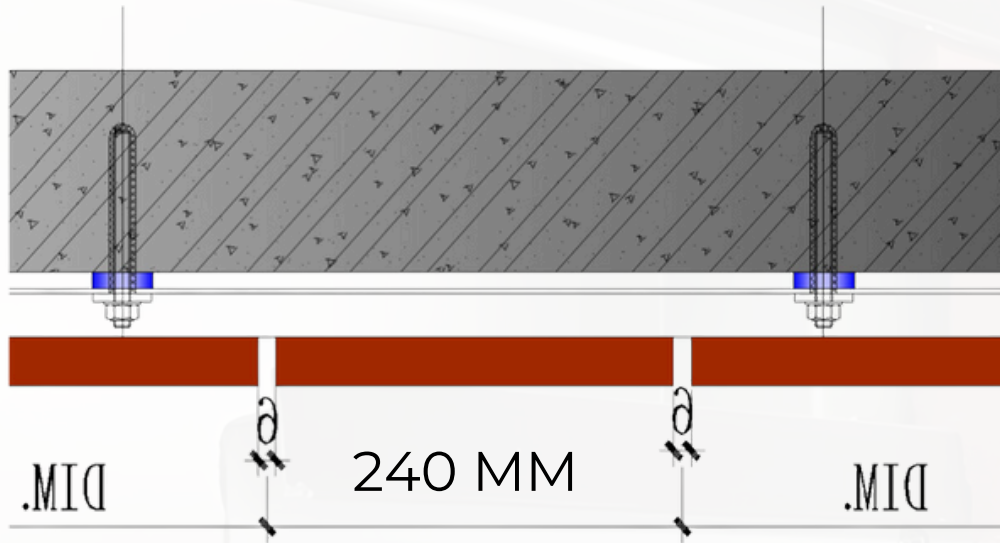
The GI (Galvanized Iron) fitting system uses galvanized iron brackets or profiles for fixing dry cladding bricks. GI is known for its strength and resistance to weather conditions due to its zinc coating, which prevents rust.

## COMPARISON BETWEEN ALUMINUM AND GI SYSTEMS

FEATURE	ALUMINUM FIXING SYSTEM	GI FITTING SYSTEM
<b>Weight</b>	Lightweight	Heavier than aluminum
<b>Corrosion Resistance</b>	Excellent (No rusting)	Good (Due to galvanization)
<b>Cost</b>	Higher initial cost	More economical
<b>Durability</b>	Long-lasting	Suitable for moderate longevity
<b>Ease of Installation</b>	High precision, quicker	Slightly more time-consuming
<b>Aesthetic Appeal</b>	Highly adaptable to modern designs	Traditional and functional



# MECHANICAL FIXING



# ADDITIONAL DETAILS

---

Modern and Warrantied Solution : Ideal for high-rise buildings, offering a sleek and durable facade.

Brick Size : 70 mm x 240 mm x 32 mm.

Water Absorption : Minimal, less than  $\pm 6\%$ , ensuring a maintenance-free facade.

Fitting System : Anchor fastener, L brackets, and Aluminum proprietary fixing system (GI option available).

Shades : Several shades available. Customization possible for larger quantities.

Minimum Order Quantity (MOQ) : 1000 sq. m. per color.

Lead Time : 2 months

Cost : ₹650 per sq. ft. (includes bricks, framework, installation, shipping, and clearance). Note: Local transport from port to site, unloading, shifting, scaffolding, and GST are extra.



# CONTACT US



+91 98192 34618



vinaykumar@citadelinfraas.com



citadelbuildingsystem



www.citadelinfraas.com



C-130, Antophill Warehousing Complex,  
Nr. Dosti Acres, VIT Road, Wadala (E),  
Mumbai Maharashtra 400037, India

